



"The Whisper Quiet Whole House Fan System"

"The natural choice for energy savings"

Installation Manual



***Model QC-1500
"The Original"***



***Model QC-4500
"Quiet Giant"***

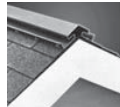
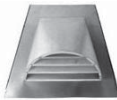
Read carefully all of this manual prior to installing the fans.

QuietCool fan installation instructions

System Sizing and Venting

VENTILATION SELECTION	CFM Recommendation	SQUARE FOOT SIZE OF STRUCTURE				
		1,500 Sq. Ft.	2,000 Sq. Ft.	2,500 Sq. Ft.	3,000 Sq. Ft.	3,500 Sq. Ft.
GOOD	2 CFM PER SQUARE FOOT	2 - QC 1500'S	3 - QC 1500'S	4 - QC 1500'S	5 - QC 1500'S	6 - QC 1500'S
		OR	OR	OR	OR	OR
BETTER	3 CFM PER SQUARE FOOT	3 - QC1500'S	4 - QC1500'S	5 - QC1500'S	6 - QC1500'S	7 - QC1500'S
		OR	OR	OR	OR	OR
BEST	4 CFM PER SQUARE FOOT	4 - QC1500'S	5 - QC1500'S	7 - QC1500'S	8 - QC1500'S	9 - QC1500'S
		OR	OR	OR	OR	OR
REQUIRED VENTILATION		2 SQ. FT FOR EACH QC1500		AND 6 SQ. FT. FOR EVERY QC 4500		

Vent type	Gable vent	Dormer vent	Eave vent	Ridge vent	Soffet vent
Average size	12" x 19.5"	14" x 8"	3.5" x 22.5"	various	various
Venting Sq. Ft.	1.20	0.70	0.35	various	various



1. Determine in which areas you would like to install your QuietCool Fans. Now it's time to go into your attic to mark the exact location for each fan install from above.

2. When you find a location, move the insulation away to get a clear view. Make sure the template fits between the framing, and there are no other obstructions in your chosen location. If there is a reason you can not use the exact spot, find a location in the area that does work. Place the template on the spot and mark it by making a hole at each corner with a screwdriver.

Repeat these steps at each location

3. Once all locations are marked, move the insulation away and return below to the house. It's now time to cut the holes at each air intake location.

4. Place the cut-out template at each location making sure you have 2 inches of clearance all the way around it. The grill that will be installed later is larger than the template. While holding the template in place, mark around it with a pencil. Using a drywall saw, or similar device, cut out the hole.

Repeat these steps at each location

5. Open and unpack each QuietCool fan. Make sure all parts are present. Most of the system comes pre-assembled. The main assembly should be put up in the attic through the crawl hole and moved into position near the ceiling cutout hole.

6. It's now time to hang the motor heads from the rafters. Your goal is to hang the motor head as far from the hole in the ceiling as possible, while making sure the ceiling box and duct will easily reach the hole.

7. Using the metal strapping attached to the motor head assembly, and the gray deck screws provided, hang the motor head from the rafters. Make sure the motor head is fairly level side to side. Again, make sure the ducting will reach the ceiling cut out with a little slack. You will need to secure the ducting later in these instructions.

1



2



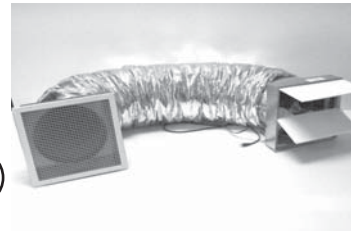
3



4



5



6



7



8. **⚠ VERY IMPORTANT!** Remove the shipping tape from the back draft dampers. Make sure the dampers will open and close easily and without obstruction.



8

9. **⚠ VERY IMPORTANT!** Make sure the fan blade spins freely. This is very important to system operation.



9

Repeat these steps at each location

10. Once all of the QuietCool fans are hung, it's time to go below and install the ceiling box and ceiling grill at each intake location.



10

11. Look through the hole and make sure there are no kinks or twists in the ducting. Pull the ceiling box down through the hole in the ceiling. While holding it in place, install a 1-3/8" drywall screw through the drywall into the flange of the ceiling box on each side to temporarily hold the box in place. Remove ceiling grill and screws from its packaging. Center the grill over the ceiling box. Install the grill with the white screws provided by screwing through the flange of the ceiling box. Some ceiling surfaces are uneven and may cause a small gap to be present. This can easily be caulked later if excessive.

Repeat these steps at each location



11

12. Return to the attic and go to each location. Using the nylon straps and the pan head screws provided, support the duct to the framing. Make sure the motor head is still level and the dampers still close naturally. This will stabilize the entire assembly. Replace any insulation that was removed.

Repeat these steps at each location

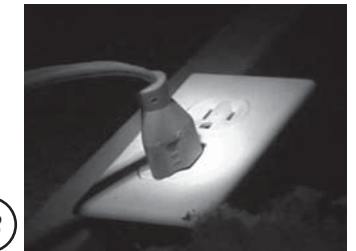


12

13. The installation is now complete except for the electrical work necessary to make them operate. The electrical wiring for the fan requires a 120 volt three prong outlet within 6 feet of the motor head in the attic.

14. The outlet should be wired to and controlled by a two-gang or three-gang box installed in the hallway wall with a timer and switch for each fan.

15. Install QuietCool Remote Control System which operates up to 6 fans (Optional feature)

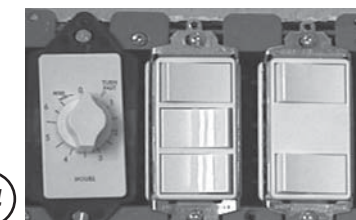


13

⚠ Avoid Back drafts

Care should be taken to avoid back drafting combustion appliances that are installed in the conditioned space. It is strongly recommended that combustion appliances NOT be installed in such a manner that they use room air for combustion. Whole house fans are capable of pulling large quantities of air from the home and particularly if not enough windows are open. This could easily back draft gas appliances located inside your home.

**Optional
Remote Control
System**



14

Manufactured by



10 Year Limited Warranty

QC Manufacturing Inc. extends this warranty to the original purchaser of a QUIETCOOL fan system and/ an ENVIROCOOL cooling system installed and used in a residence under normal conditions within the continental United States.

- A. Ten Year coverage applies to the QuietCool fan assembly. At our option we will repair or replace any part of the assembly should it fail to operate during the first ten years from the date of original purchase. This coverage does not apply to controls such as timers, thermostats and switches.
B. Five year coverage applies to the structural integrity of the EnviroCool cellulose rigid media. We will replace the media should it fail as a result of defective workmanship during the first five years from the date of original purchase. Mineral accumulations nor damage to the media as a result cleaning the media and damage as a result operating the media using softened water are not warranty defects and are not covered by this warranty.
C. One year coverage for all other components including grills, housings, pumps, controls and accessories furnished by QC Manufacturing Inc. At our option, we will repair or replace any part fails as a result of defective material or workmanship during the first year from the date of original purchase.
D. This warranty does not cover any of the following:
1. We are not responsible for any incidental or consequential damage resulting from the operation of our equipment or any malfunction thereof.
2. We are not responsible for the cost of service calls to diagnose the cause of problems or the labor charge to un-install and re-install any components.
3. We are not responsible for any damage resulting from the use of water softeners, chemicals, or de-scale materials.
4. The result of failure or damage due to faulty installation, abuse, misuse, unauthorized alteration, lack of maintenance, or transportation damage.
5. Freight or postage for warranty claims.
6. Any odor that may be noticed from the use of the EnviroCool unit. A slight odor may be noticed during the initial start-up and should disappear within the first few days of operation. Any continuing odors are the cause of faulty operation or faulty maintenance.
E. To obtain service under this warranty, contact the dealer where you purchased the equipment. If you are unable to find or reach your dealer, contact Customer Service, QC Manufacturing Inc., 30724 Benton Road Suite C302-589, Winchester, CA 92596.
F. Please register your product/products for warranty on line at: www.QuietCoolsystems.com/onlineregistration.com

This warranty is the only warranty extended by QC Manufacturing Inc. to purchasers or suppliers of our equipment. QC Manufacturing Inc. disclaims all other warranties, express or implied, that arise by operation of the law. Some states do not allow the exclusion incidental or consequential damages or limitations on how long an implied warranty lasts so the above limitations or exclusions may not apply to you.

Serial Numbers

QuietCool _____ QuietCool _____ QuietCool _____
QuietCool _____ QuietCool _____ QuietCool _____
QuietCool _____ QuietCool _____ QuietCool _____

Product Registration: Please register your product on line at www.QuietCoolsystems.com/registration.htm.